



Automatic Adaptive Core fusion splicer

T-56+

Powered by



NanoTune™
Enhanced splice experience



SumiCloud™



Power through with ease



Proven field
toughness



High environmental
resistance



Smart and easy
operation



Reduce work time
Splicing 6s
Heating 15s

Specifications		
Items		T-56+
Optical fiber requirements	Material	Silica glass
	Fiber count / Profile types	Single / SMF(G.652), MMF(G.651), DSF(G.653), NZDSF(G.655), BIF(G.657)
	Fiber diameter	Cladding diameter : 80 - 150μm, Coating diameter : 100 - 1,000μm
	Cleave length	5 - 16mm with coating clamp
Standard performance	Splice loss (typical)*1	SMF : 0.02dB, MMF : 0.01dB, DSF : 0.04dB, NZDSF : 0.04dB, BIF : 0.02dB
	Return loss (typical)	60dB or greater
	Splice time (typical)	6sec(SM G652 Quick Mode), 8sec(Auto Mode)
	Heating time (typical)	15sec (FPS-61-2.6 sleeve, S60mm 0.25)
	Splice & Heat cycles per battery full charge**	Approx. 310 (BU-16)
	Fiber view & magnification	2 CMOS cameras observation, 350X (zoom : 700X) for X or Y single axis view, Max. 350 for both X & Y dual axis view
	Proof test	1.96 - 2.09N
	Applicable protection sleeve	60mm, 40mm & Sumitomo Nano sleeves
Programs	Splice programs	Max. 300, 40 are pre-optimised, 260 editable by user
	Heating programs	Max. 100, 23 are pre-optimised, 77 editable by user
Functions	Splice image capture / Splice data storage	200 images / 10,000 splice data (internal memory only) 50,200/20,000 (with 16GB SD card)
	Multi clamps	Applicable: 250μm, 900μm tight & loose buffer fiber, 2&3mm jacket cord and rectangular drop cable, 3.5mm round drop cable, reversible for use from front&back
	Onboard user training video	Provided
	Automatic fiber identification	SMF / MMF / NZDS / BIF / Other
	Automatic arc calibration	Automatically compensates for environmental condition changes
Size / Weight	Display of remaining Splice & Heat cycles	Provided (Battery mode)
	Size	128(W) x 154(D) x 130(H) mm (without anti-shock rubber)
	Weight	1.7kg (without Battery) / 2.0kg (with Battery BU-16)
	Monitor	5.0" touch screen color LCD display
Terminals	DC output	DC 12V (for JR-6+)
	USB port	USB 2.0 (mini-B type)
	Storage media	SD / SDHC memory card MAX32GB
Power supply	AC input	AC 100 - 240V, 50/60Hz (ADC-16)
	DC input	DC 10 - 15V
	Battery pack	Li-ion 10.8V, 6,400mAh (BU-16)
Operating condition		Altitude : 0 - 6,000m, Temperature : -10 - +50°C, Humidity : 0 - 95% (non-condensing), Wind velocity : up to 15m/sec
Storage condition		Temperature : -40 - +80°C, Humidity : 0 - 95% (non-condensing), Battery : -20 - +30°C (long term)
Electrode life *3		6,000 arc discharges
Software updates		Internet
Data management		Can be stored, edited and analyzed by dedicated PC software

*1 : Average value of the final inspection in room temperature with Sumitomo identical fiber. Measured by cut-back method relevant to ITU-T and IEC standards.

*2 : Splice & Heat cycles may vary depending on the battery status and the operating environment.

*3 : Achieved in lab condition. Electrode life may vary depending on the operating environment.

Environmental Durability*

	Test details
Shock resistance	Drop from 76cm on 5 faces(excluding top face), 4 edges and corners (bottom face only)
Impact resistance	Equivalent to IK07 on LCD monitor
Water resistance	Equivalent to IPx2
Dust resistance	Equivalent to IP5x

*Splicer operation after shock, impact, water or dust tests, was confirmed under battery power, by Sumitomo.

Does not guarantee the product will not be damaged by these conditions.

Basic Accessories

Part name	Part No.	Qty.
AC adapter	ADC-16	1 pc
AC power cord	PC-AC<X>*	1 pc
Cooling tray	—	1 pc
Battery pack	BU-16	1 pc
Spare electrode	ER-10	1 pair
Quick reference guide	—	1 pc
Carrying case with worktable	CC-82	1 pc
Hand strap	—	1 pc
USB cable	—	1 pc

*X=2(USA), 10(BRAZIL)

Items listed in the table are typical contents included with the splicer body. Overall kit content may vary regionally. Please check with your local authorised reseller to confirm kit content in your region.

Accessories

	Part name	Part No.	Remarks
Accessories for Splicer	Fiber holder	FHS-025	For φ0.25mm single fiber
		FHS-09	For φ0.9mm single fiber
		FHS-025/LB5	For 0.9mm loose buffered single fiber
		FHD-1	For indoor / outdoor rectangular drop cable
		FHC-3	For 3mm cable
		Lynx2-UML-S	For φ3mm cord and φ0.9mm single fiber
Accessories	Battery pack	BU-16	Li-ion 6,400mAh
	Battery charger	BC-16	—
	Car battery cable	PCV-16	Vehicle 12V outlet
	Electrode	ER-10	—
	Handheld cleaver	FC-8R-FC	Auto blade rotation + cleave counter
		FC-8R-F	Auto blade rotation
	Tabletop cleaver	FC-6R+	Auto blade rotation
		FC-6S+	Single fiber cleaver
	Jacket remover	JR-M03	Jacket remover for single fiber
	Loose tube cutter	LTC-01	—
	Alcohol dispenser	HR-3	—
	Fiber protection sleeve	FPS-1	60mm, diameter after shrink approx. φ3.2mm
		FPS-40	40mm, diameter after shrink approx. φ3.2mm
		FPS-61-2.6	61mm, diameter after shrink approx. φ2.6mm



Carrying case with worktable
CC-82



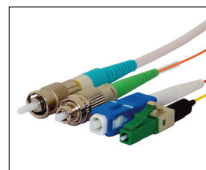
Handy cleaver
FC-8R series



Table-top cleaver
FC-6+ series



Jacket remover
JR-M03



Splice-On Connector
Lynx-Custom Fit™



Electrode
ER-10

Part Number	Description
TYPE-56p-CA-KIT-6RSCp	TYPE-56+ Fusion Splicer Kit includes Precision Cleaver w/ Auto Rotating Blade (FC-6R+), Fiber Stripper (JR-M03), Fiber Clamps, One Pack of Fiber Protection Sleeves, Shipping Case, one set of Spare Electrodes (ER-10), AC Interface/Battery Charger with Power Cord, Battery Unit (BU-16)
TYPE-56p-CA-KIT-8R	TYPE-56+ Fusion Splicer Kit includes Precision Cleaver w/ Auto Rotating Blade (FC-8R), Fiber Stripper (JR-M03), Fiber Clamps, One Pack of Fiber Protection Sleeves, Shipping Case, one set of Spare Electrodes (ER-10), AC Interface/Battery Charger with Power Cord, Battery Unit (BU-16)

Sumitomo Electric Industries, Ltd.

Please contact us Mail to : fs-inquiry-sml@list.sei.jp

■ Specifications are subject to change without prior notice.

Designed in Japan
OT56+10-NA/CALA-EN002(2022.07)